

The subject might come after the verb

At the front of the building stands two bronze statues.

SAMPLE

The subject might come after the verb

At the front of the building stands two bronze ***STATUES.***

The subject might come after the verb

At the front of the building stands two bronze *STATUES*.

Two bronze *STATUES* stands at the front of the building.

The subject might come after the verb

- ✘ Two bronze **STATUES** stands at the front of the building.
- ✓ Two bronze **STATUES** stand at the front of the building.

Throughout the nineteenth century, as optic
technology burgeoned, academic institutions built larger
and larger telescopes that could peer farther and farther
into the night sky. With the invention of photography,
observatories could now produce records of the images
their telescopes captured. This meant the astronomers
could leave the tedious work of data collection to low-
paid workers without wasting valuable telescope time.
These workers were called “computers”, women who
would compute the data in the photographs for 25 cents
an hour.

The “invention of photography”
(line 11) was important to
astronomers because it

Throughout the nineteenth century, as optic technology burgeoned, academic institutions built larger and larger telescopes that could peer farther and farther into the night sky. **With the invention of photography, observatories could now produce records of the images their telescopes captured.** This meant the astronomers could leave the tedious work of data collection to low-paid workers without wasting valuable telescope time. These workers were called “computers”, women who would compute the data in the photographs for 25 cents an hour.

The “invention of photography” (line 11) was important to astronomers because it

Throughout the nineteenth century, as optic technology burgeoned, academic institutions built larger and larger telescopes that could peer farther and farther into the night sky. **With the invention of photography, observatories could now produce records of the images their telescopes captured. This meant the astronomers could leave the tedious work of data collection to low-paid workers without wasting valuable telescope time.**

These workers were called “computers”, women who would compute the data in the photographs for 25 cents an hour.

The “invention of photography” (line 11) was important to astronomers because it

Throughout the nineteenth century, as optic technology burgeoned, academic institutions built larger and larger telescopes that could peer farther and farther into the night sky. **With the invention of photography, observatories could now produce records of the images their telescopes captured. This meant the astronomers could leave the tedious work of data collection to low-paid workers without wasting valuable telescope time.**

These workers were called “computers”, women who would compute the data in the photographs for 25 cents an hour.

The “invention of photography” (line 11) was important to astronomers because it

- A) allowed them to see farther into the night sky.
- B) made data collection easier.
- C) gave them more leisure time.
- D) provided opportunities for women.

Throughout the nineteenth century, as optic technology burgeoned, academic institutions built larger and larger telescopes that could peer farther and farther into the night sky. **With the invention of photography, observatories could now produce records of the images their telescopes captured. This meant the astronomers could leave the tedious work of data collection to low-**

10
15 **paid workers without wasting valuable telescope time.**

These workers were called “computers”, women who would compute the data in the photographs for 25 cents an hour.

The “invention of photography” (line 11) was important to astronomers because it

- ✗) allowed them to see farther into the night sky.
- ✓) made data collection easier.
- ✗) gave them more leisure time.
- ✗) provided opportunities for women.

Throughout the nineteenth century, as optic technology burgeoned, academic institutions built larger and larger telescopes that could peer farther and farther into the night sky. **With the invention of photography, observatories could now produce records of the images their telescopes captured. This meant the astronomers could leave the tedious work of data collection to low-**

10
15 **paid workers without wasting valuable telescope time.**

These workers were called “computers”, women who would compute the data in the photographs for 25 cents an hour.

The “invention of photography” (line 11) was important to astronomers because it

✗) allowed them ~~to see farther~~ into the night sky.

RANDOM

✓) **made data collection easier.**

✗) gave them more ~~leisure~~ time.

RANDOM

✗) provided opportunities for ~~women.~~

IRRELEVANT

In the standard (x,y) coordinate plane below, the area of $\triangle ABC$ is 15, the length of \overline{OB} is 3 and the coordinates of point A are $(0, 6)$. What is the slope of segment \overline{AC} ?

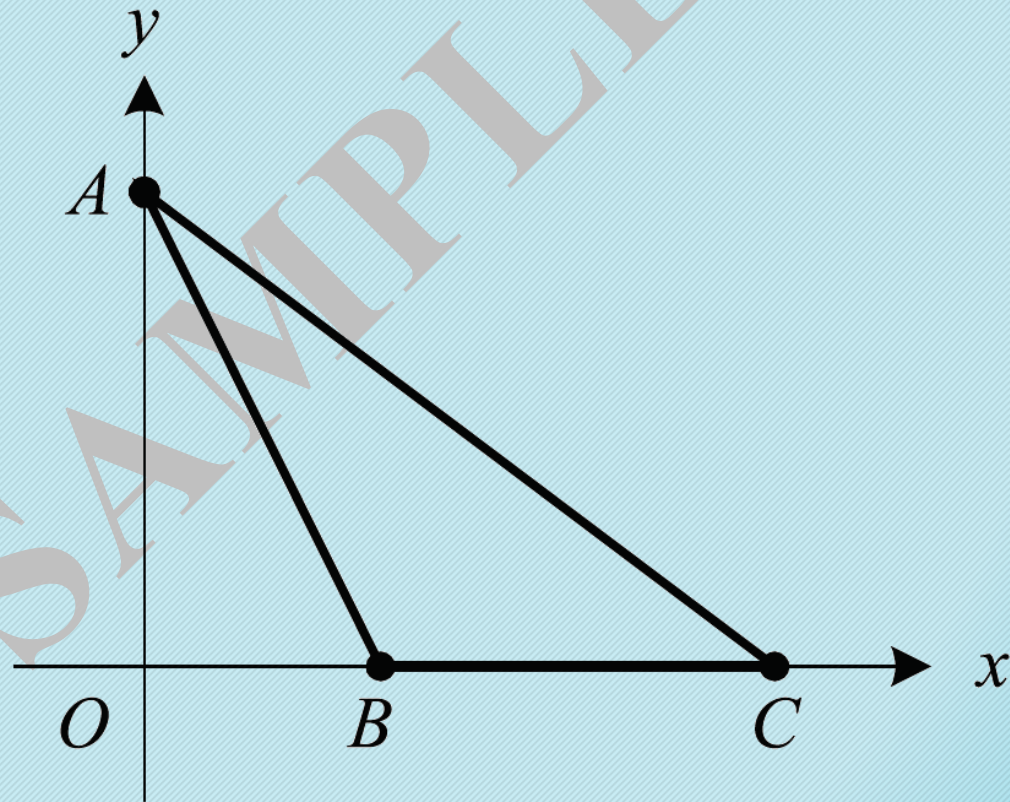
F. -2

G. $-\frac{4}{3}$

H. $-\frac{6}{5}$

J. $-\frac{3}{4}$

K. $-\frac{1}{2}$



In the standard (x,y) coordinate plane below, the area of $\triangle ABC$ is 15, the length of \overline{OB} is 3 and the coordinates of point A are $(0, 6)$. What is the slope of segment \overline{AC} ?

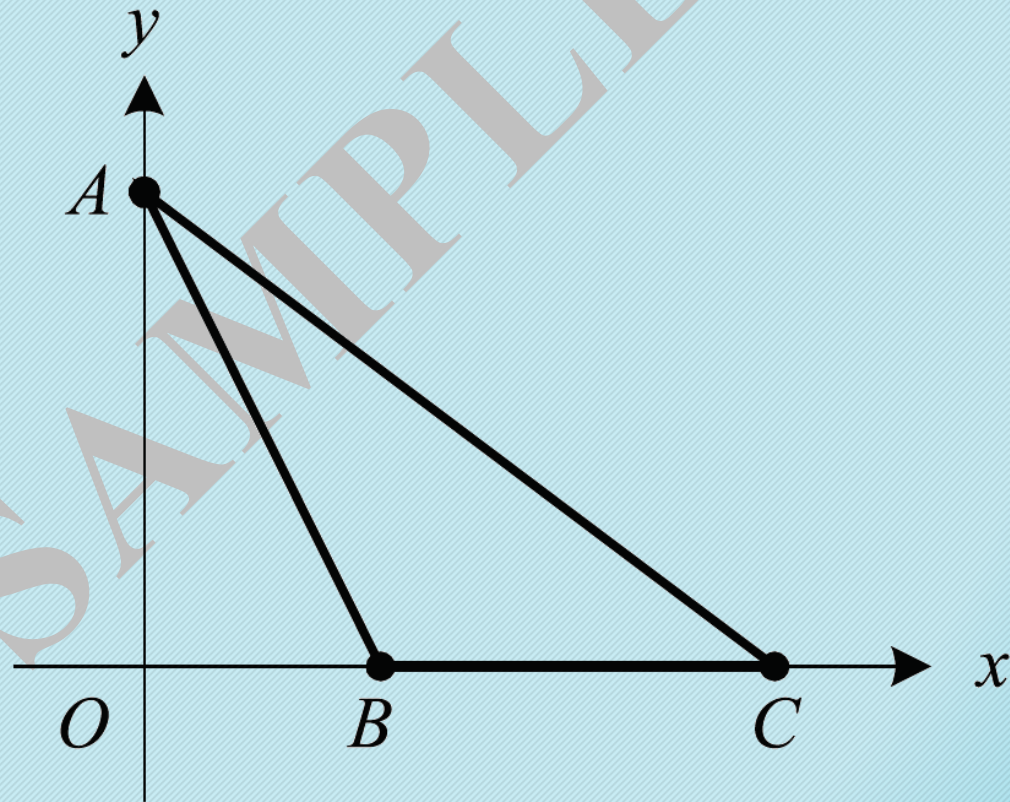
F. -2

G. $-\frac{4}{3}$

H. $-\frac{6}{5}$

J. $-\frac{3}{4}$

K. $-\frac{1}{2}$



In the standard (x,y) coordinate plane below, the area of $\triangle ABC$ is 15, the length of \overline{OB} is 3 and the **coordinates of point A are $(0, 6)$** . What is the slope of segment \overline{AC} ?

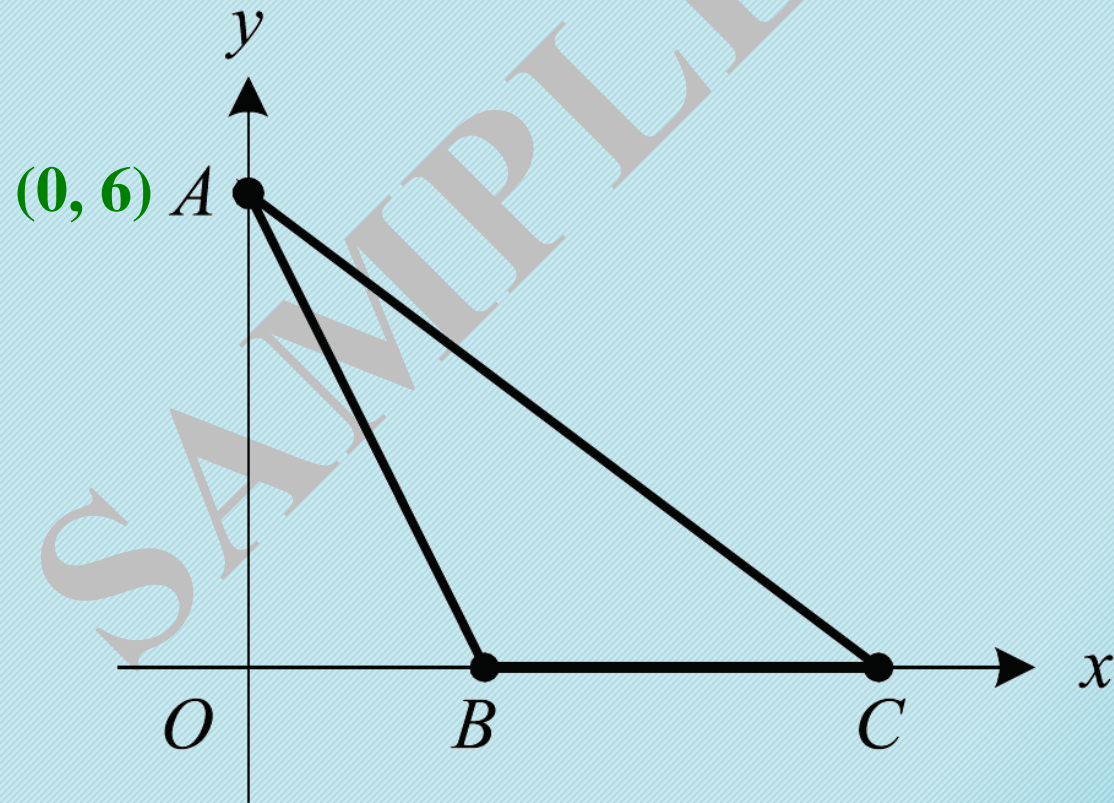
F. -2

G. $-\frac{4}{3}$

H. $-\frac{6}{5}$

J. $-\frac{3}{4}$

K. $-\frac{1}{2}$



In the standard (x,y) coordinate plane below, the area of $\triangle ABC$ is 15, the length of \overline{OB} is 3 and the **coordinates of point A are $(0, 6)$** . What is the slope of segment \overline{AC} ?

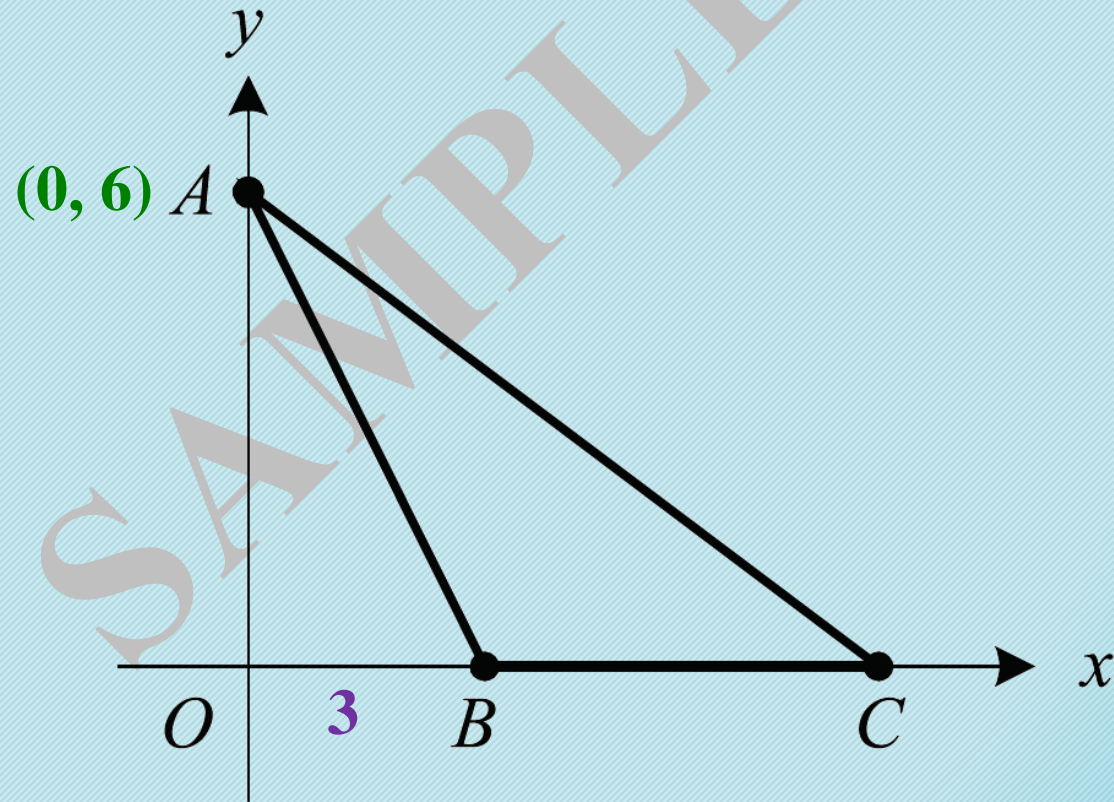
F. -2

G. $-\frac{4}{3}$

H. $-\frac{6}{5}$

J. $-\frac{3}{4}$

K. $-\frac{1}{2}$



In the standard (x,y) coordinate plane below, the **area of $\triangle ABC$ is 15**, the length of \overline{OB} is 3 and the **coordinates of point A are $(0, 6)$** . What is the slope of segment \overline{AC} ?

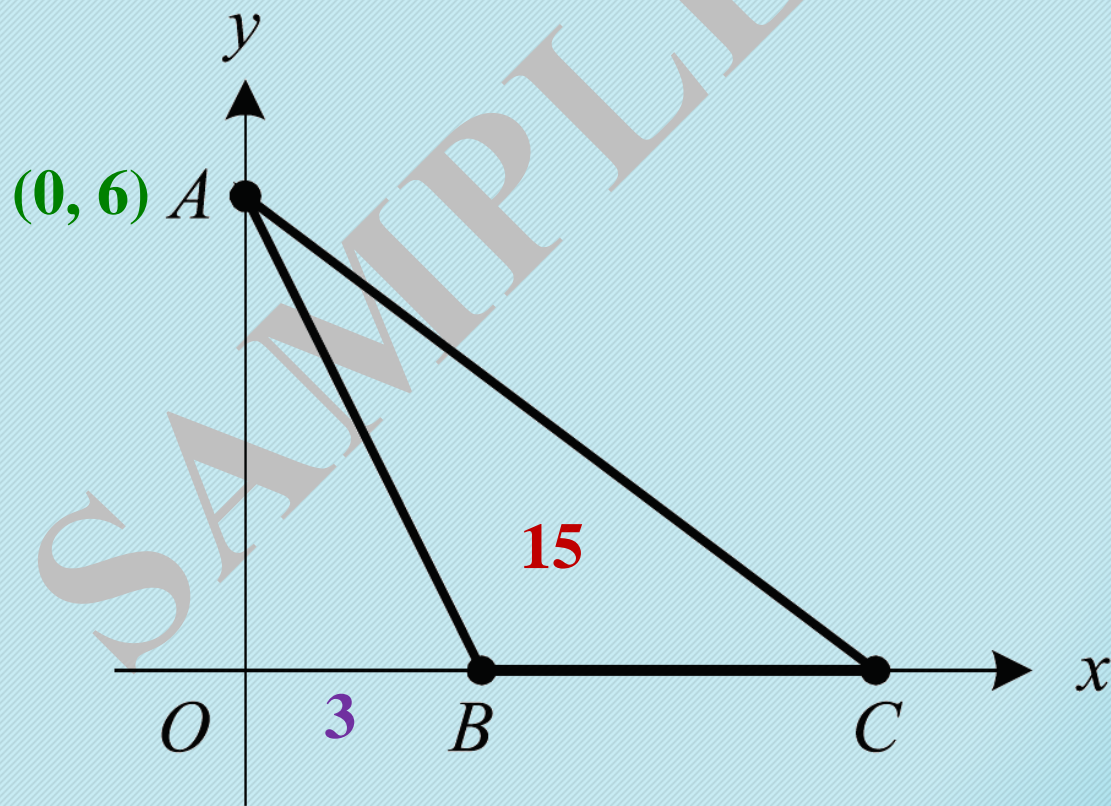
F. -2

G. $-\frac{4}{3}$

H. $-\frac{6}{5}$

J. $-\frac{3}{4}$

K. $-\frac{1}{2}$



In the standard (x,y) coordinate plane below, the **area of $\triangle ABC$ is 15**, the length of \overline{OB} is 3 and the **coordinates of point A are $(0, 6)$** . What is the slope of segment \overline{AC} ?

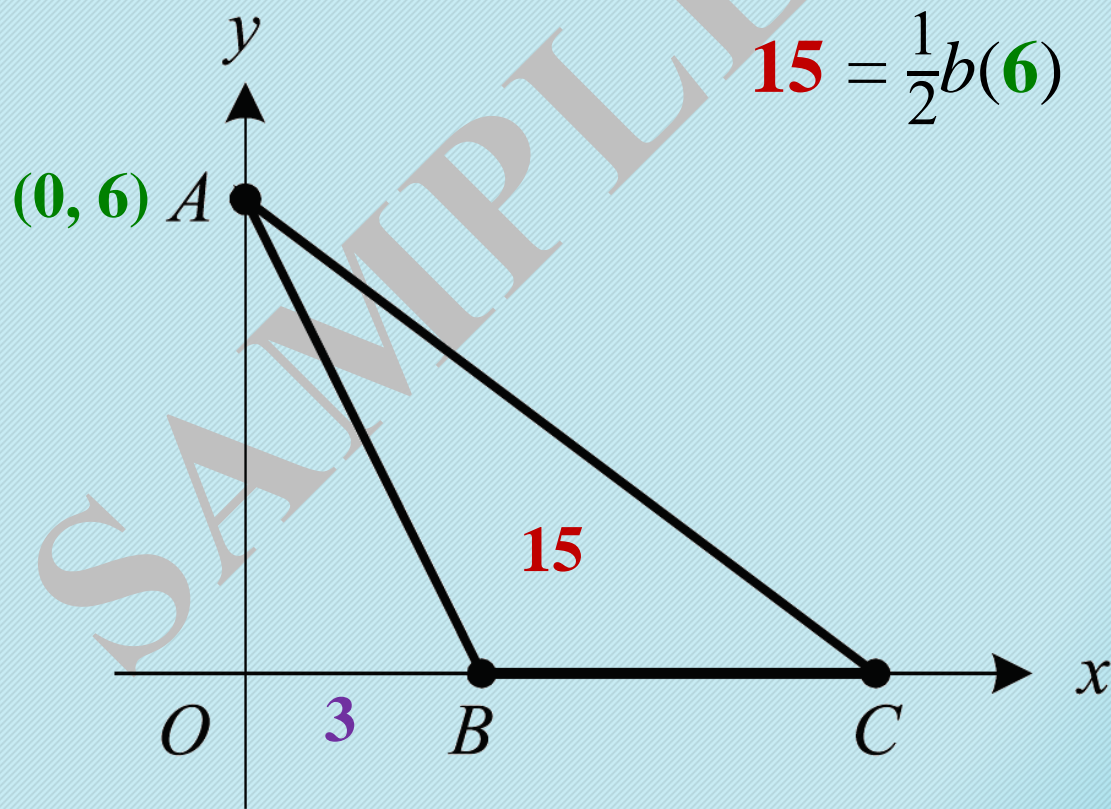
F. -2

G. $-\frac{4}{3}$

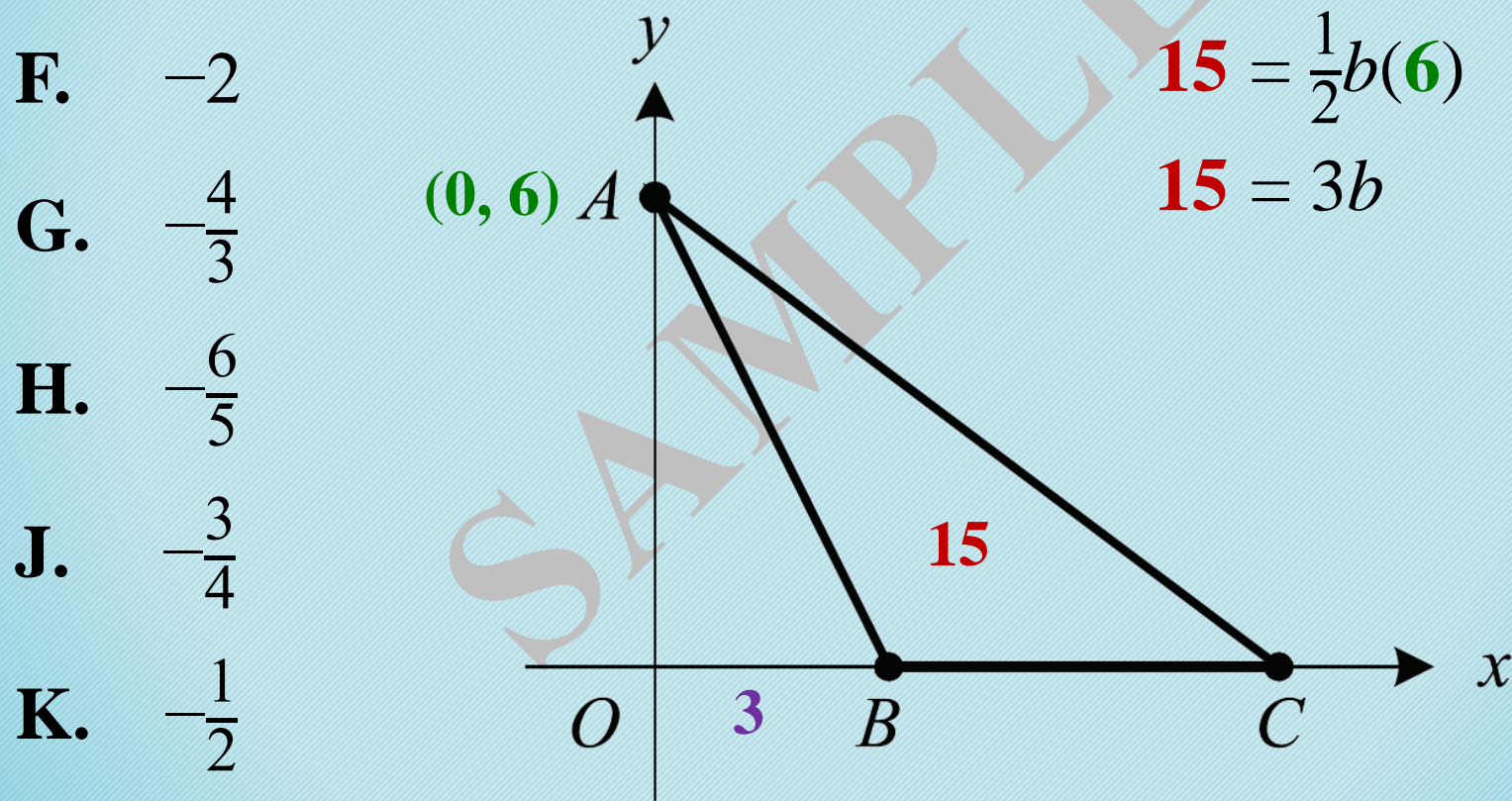
H. $-\frac{6}{5}$

J. $-\frac{3}{4}$

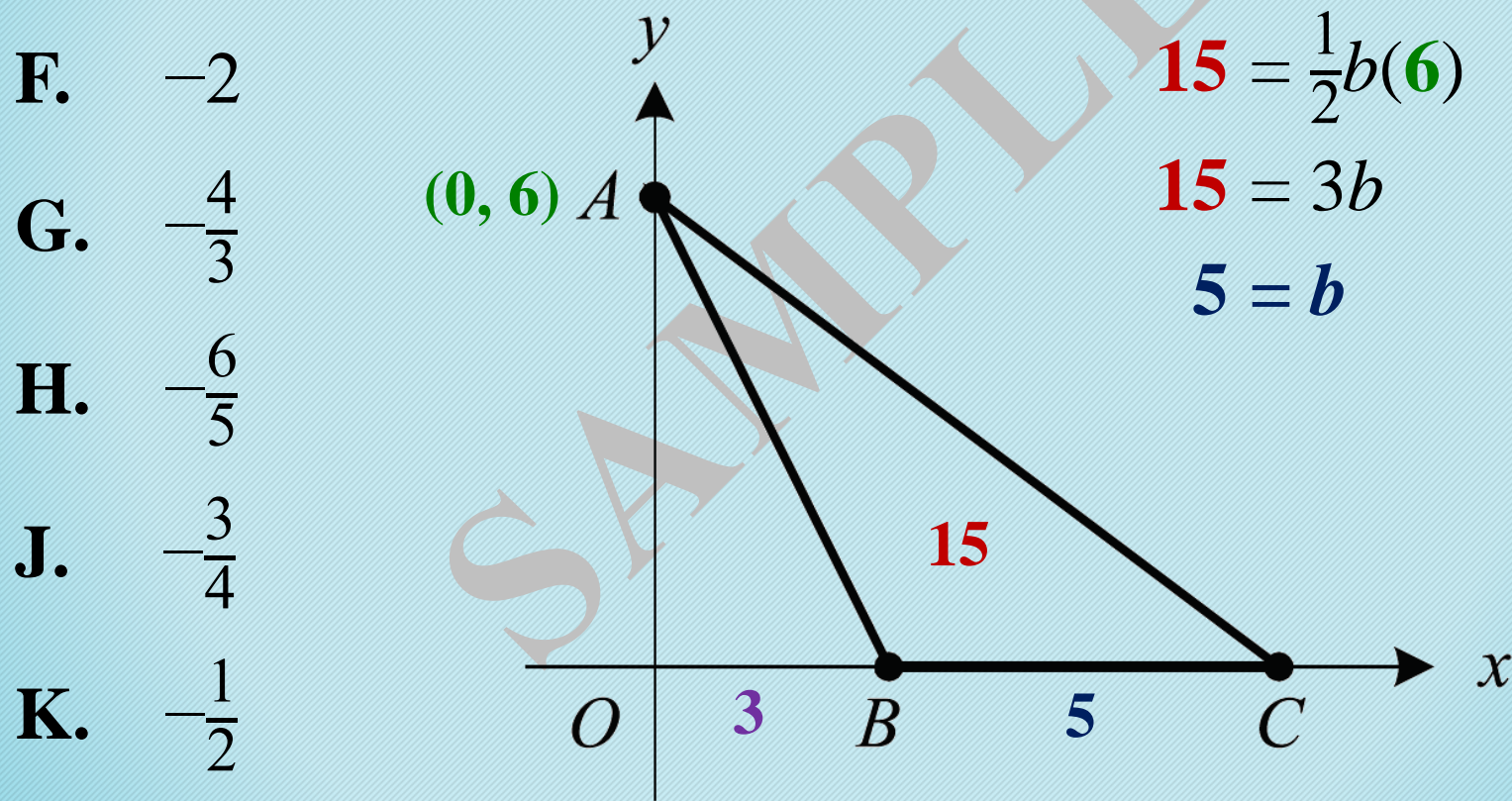
K. $-\frac{1}{2}$



In the standard (x,y) coordinate plane below, the **area of $\triangle ABC$ is 15**, the length of \overline{OB} is 3 and the **coordinates of point A are $(0, 6)$** . What is the slope of segment \overline{AC} ?



In the standard (x,y) coordinate plane below, the **area of $\triangle ABC$ is 15**, the length of \overline{OB} is 3 and the **coordinates of point A are $(0, 6)$** . What is the slope of segment \overline{AC} ?



In the standard (x,y) coordinate plane below, the **area of $\triangle ABC$ is 15**, the length of \overline{OB} is 3 and the **coordinates of point A are $(0, 6)$** . What is the slope of segment \overline{AC} ?

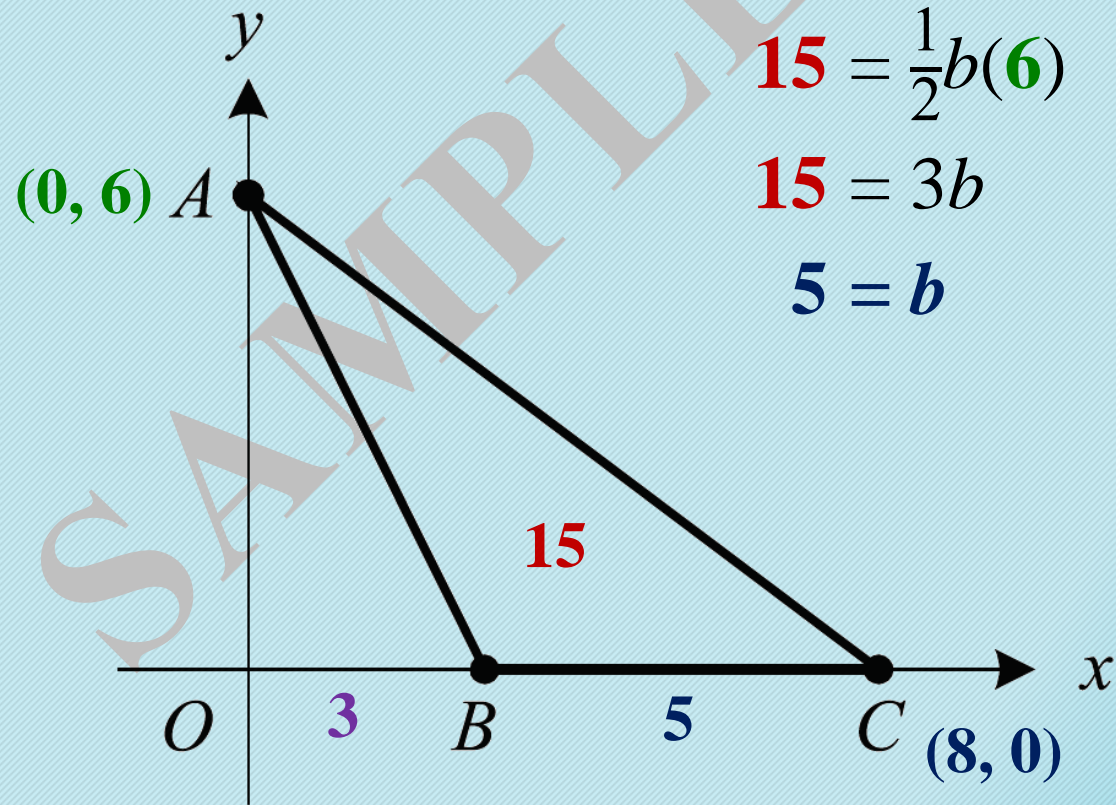
F. -2

G. $-\frac{4}{3}$

H. $-\frac{6}{5}$

J. $-\frac{3}{4}$

K. $-\frac{1}{2}$



In the standard (x,y) coordinate plane below, the **area of $\triangle ABC$ is 15**, the length of \overline{OB} is 3 and the **coordinates of point A are $(0, 6)$** . What is the slope of segment \overline{AC} ?

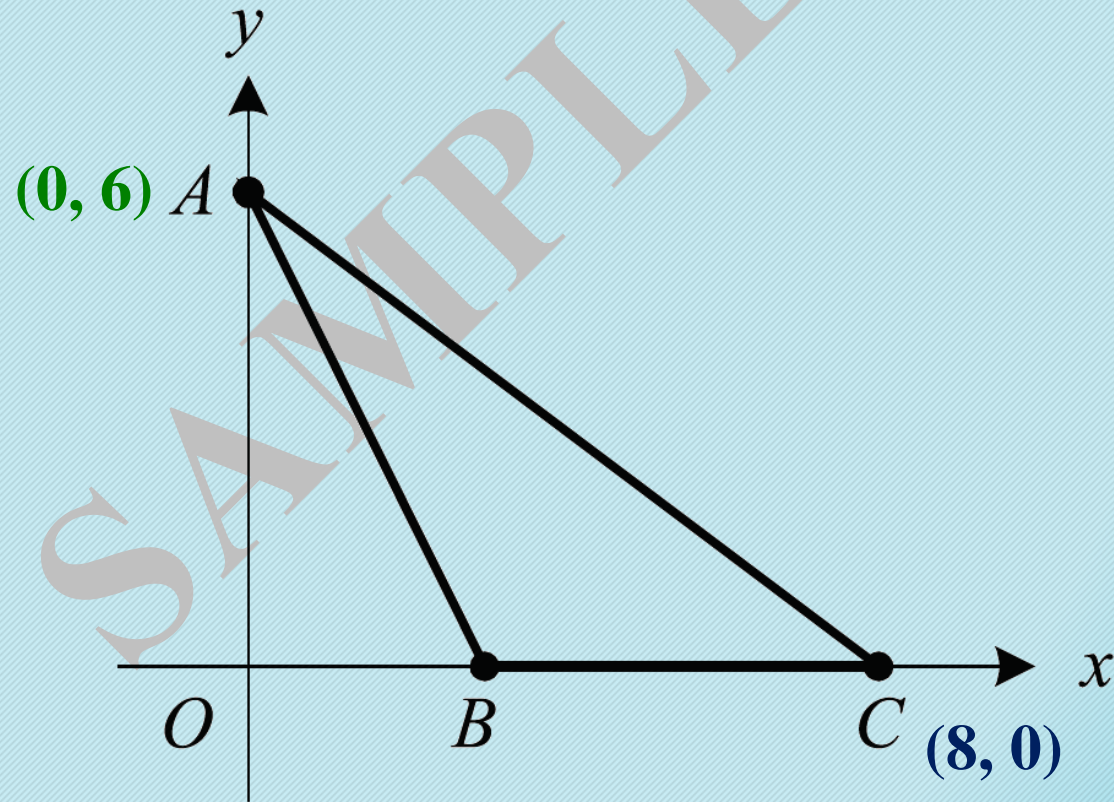
F. -2

G. $-\frac{4}{3}$

H. $-\frac{6}{5}$

J. $-\frac{3}{4}$

K. $-\frac{1}{2}$



In the standard (x,y) coordinate plane below, the **area of $\triangle ABC$ is 15**, the length of \overline{OB} is 3 and the **coordinates of point A are $(0, 6)$** . What is the slope of segment \overline{AC} ?

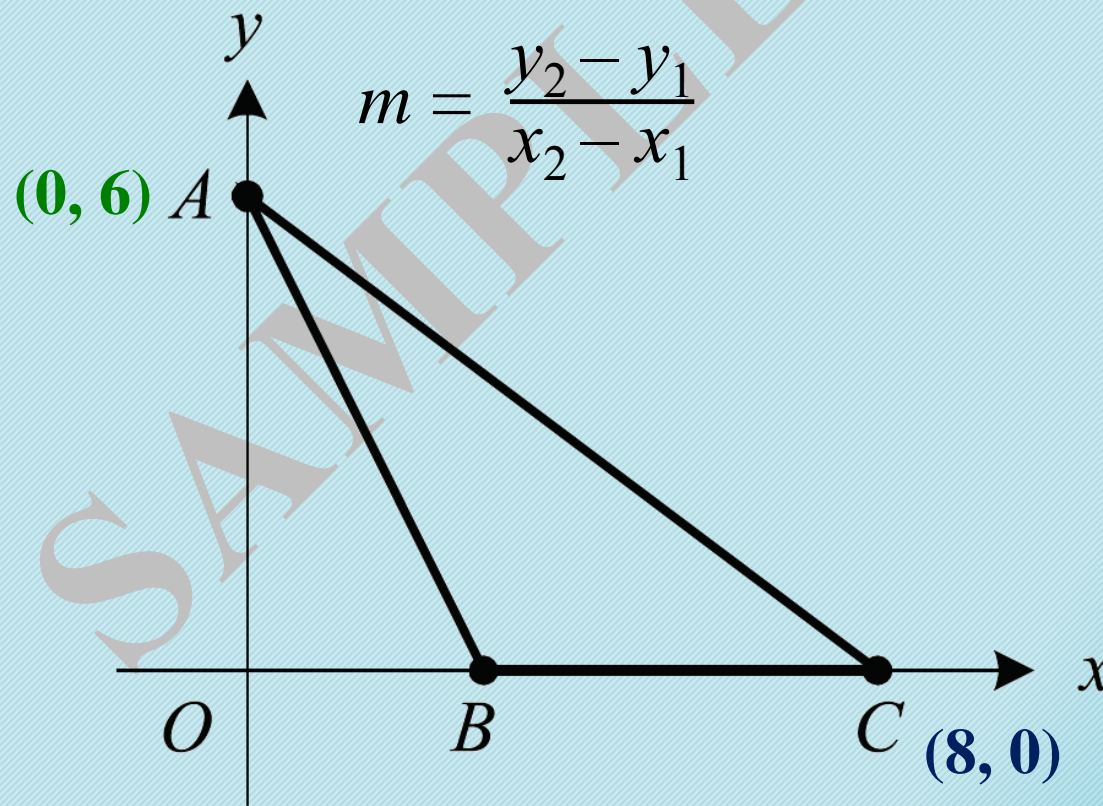
F. -2

G. $-\frac{4}{3}$

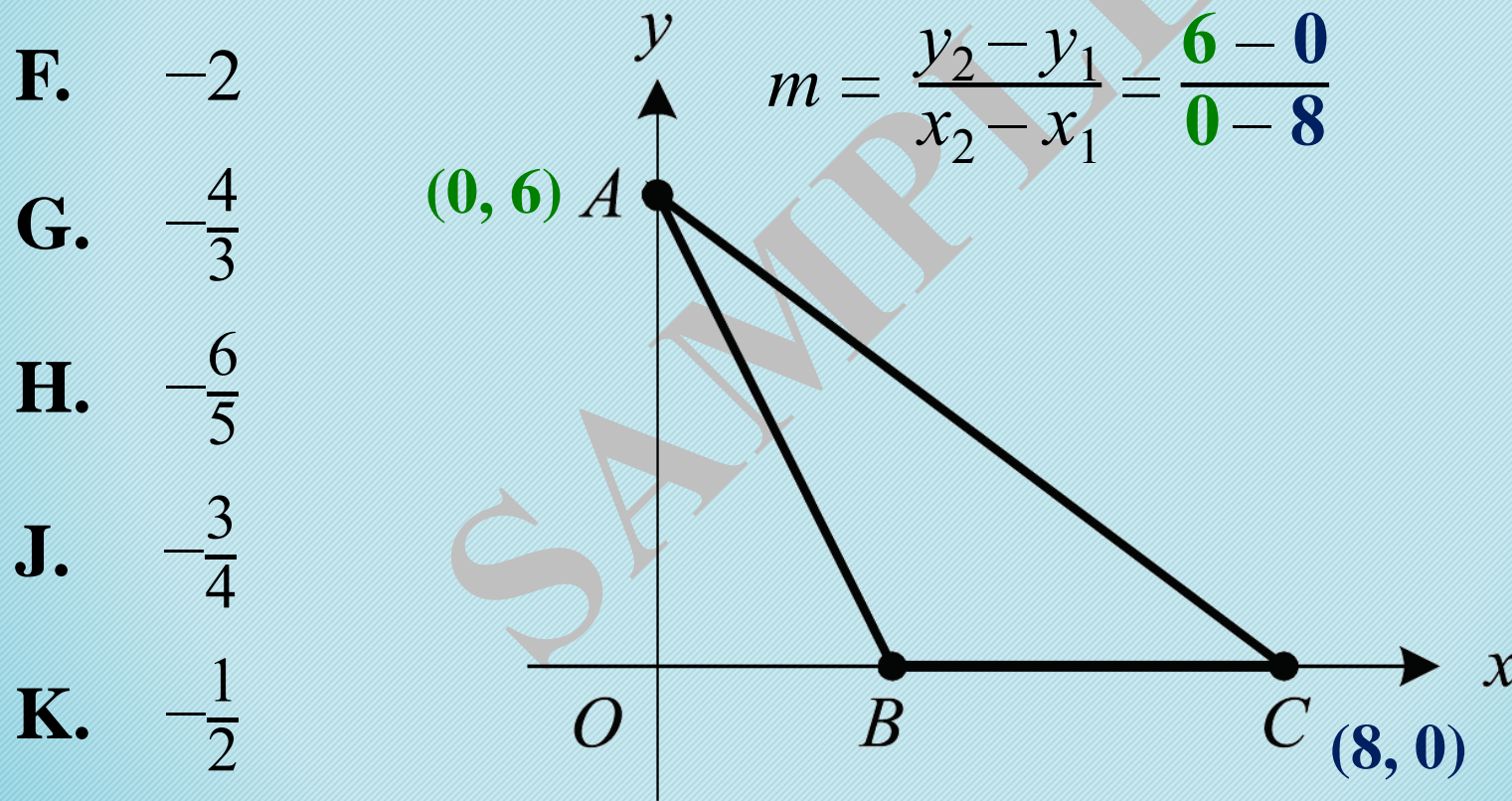
H. $-\frac{6}{5}$

J. $-\frac{3}{4}$

K. $-\frac{1}{2}$



In the standard (x,y) coordinate plane below, the **area of $\triangle ABC$ is 15**, the length of \overline{OB} is 3 and the **coordinates of point A are $(0, 6)$** . What is the slope of segment \overline{AC} ?



In the standard (x,y) coordinate plane below, the **area of $\triangle ABC$ is 15**, the length of \overline{OB} is 3 and the **coordinates of point A are $(0, 6)$** . What is the slope of segment \overline{AC} ?

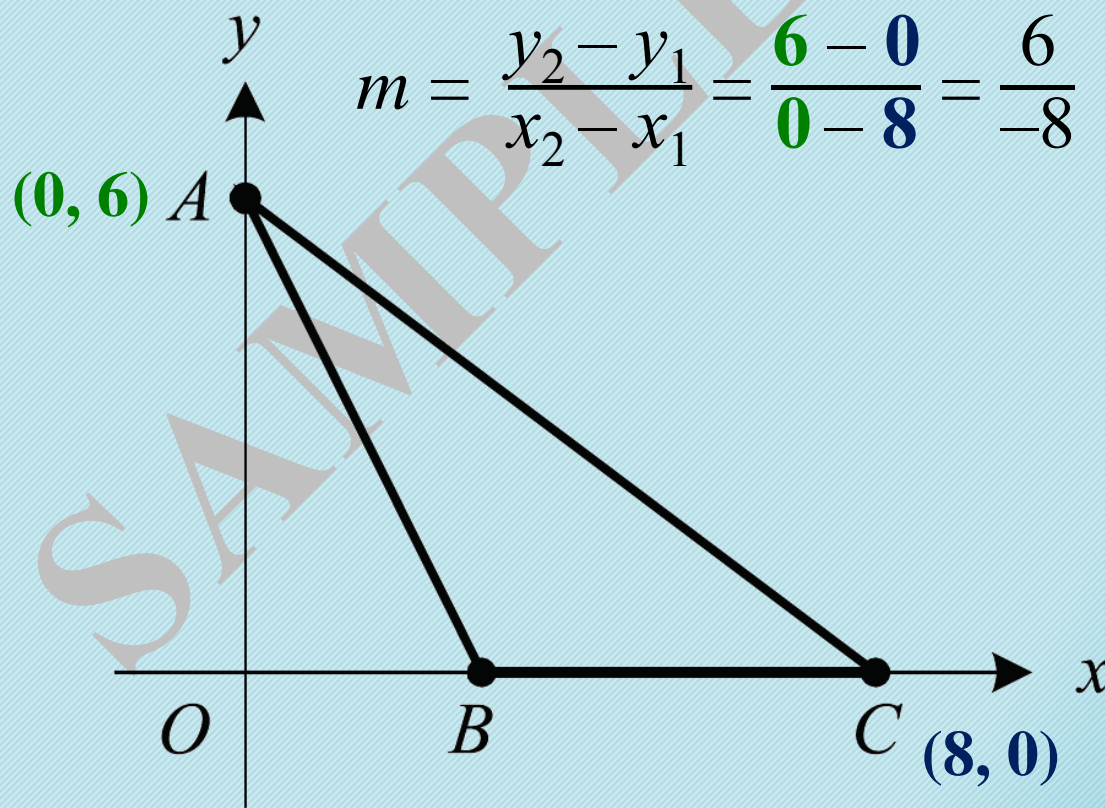
F. -2

G. $-\frac{4}{3}$

H. $-\frac{6}{5}$

J. $-\frac{3}{4}$

K. $-\frac{1}{2}$



In the standard (x,y) coordinate plane below, the **area of $\triangle ABC$ is 15**, the length of \overline{OB} is 3 and the **coordinates of point A are $(0, 6)$** . What is the slope of segment \overline{AC} ?

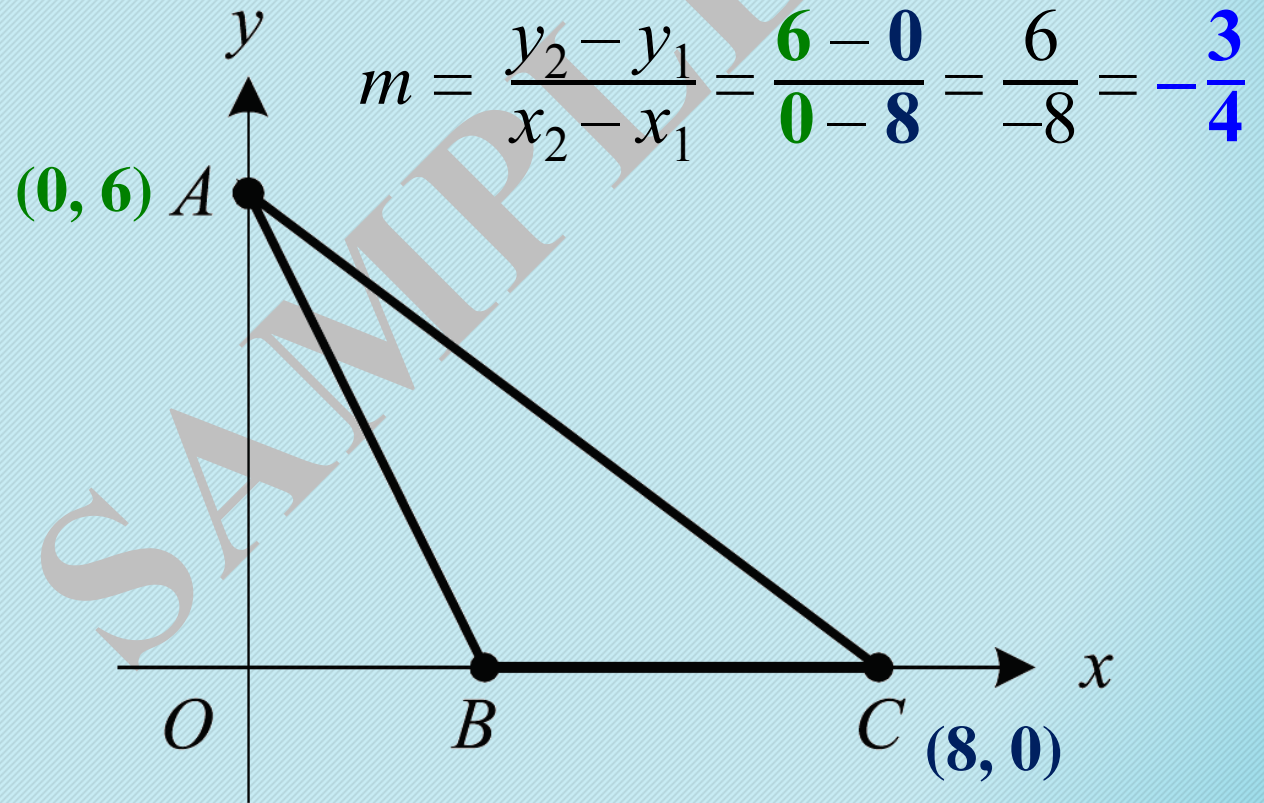
F. -2

G. $-\frac{4}{3}$

H. $-\frac{6}{5}$

J. $-\frac{3}{4}$

K. $-\frac{1}{2}$



Experiment 1

Students added 2 g of powdered blergarine to a beaker filled with 100 mL of water at 20°C. Every 2 minutes, a PKE meter was used to measure the concentration of snarfine. The results are shown in Figure 1.

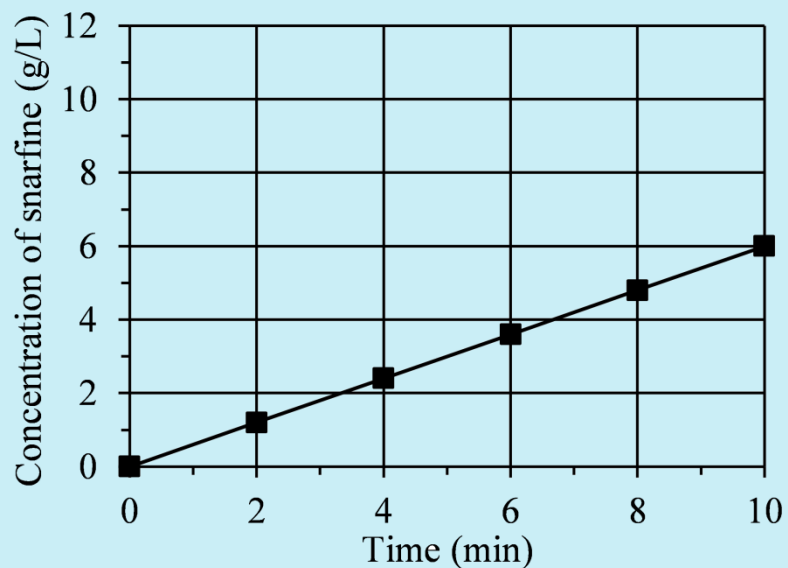


Figure 1

If, in Experiment 1, a measurement had been taken 12 minutes after the start of the experiment, the concentration of snarfine most likely would have been closest to which of the following?

- F. 4.2 g/L
- G. 5.5 g/L
- H. 7.2 g/L
- J. 10.8 g/L

Experiment 1

Students added 2 g of powdered blergarine to a beaker filled with 100 mL of water at 20°C. Every 2 minutes, a PKE meter was used to measure the concentration of snarfine. The results are shown in Figure 1.

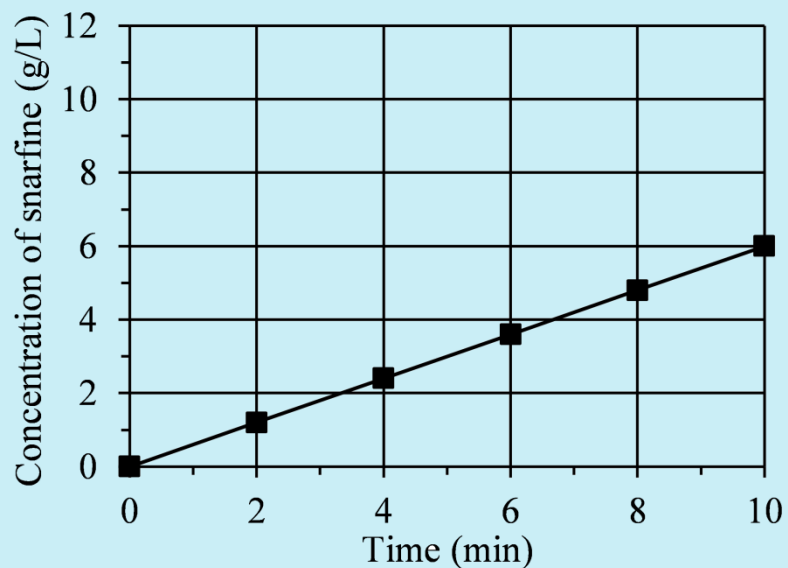


Figure 1

If, in **Experiment 1**, a measurement had been taken **12 minutes** after the start of the experiment, the **concentration of snarfine** most likely would have been closest to which of the following?

- F. 4.2 g/L
- G. 5.5 g/L
- H. 7.2 g/L
- J. 10.8 g/L

Experiment 1

Students added 2 g of powdered blergarine to a beaker filled with 100 mL of water at 20°C. Every 2 minutes, a PKE meter was used to measure the concentration of snarfine. The results are shown in Figure 1.

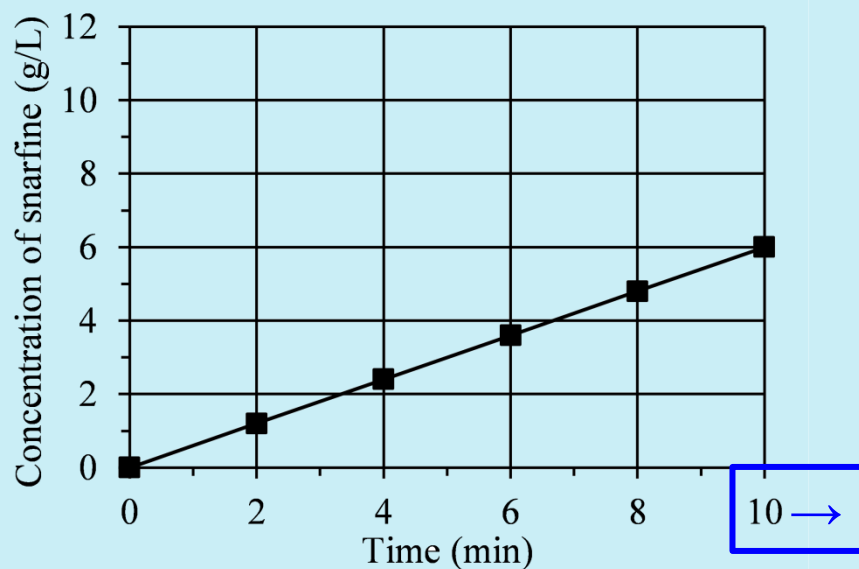


Figure 1

If, in **Experiment 1**, a measurement had been taken **12 minutes** after the start of the experiment, the **concentration of snarfine** most likely would have been closest to which of the following?

- F. 4.2 g/L
- G. 5.5 g/L
- H. 7.2 g/L
- J. 10.8 g/L

Experiment 1

Students added 2 g of powdered blergarine to a beaker filled with 100 mL of water at 20°C. Every 2 minutes, a PKE meter was used to measure the concentration of snarfine. The results are shown in Figure 1.

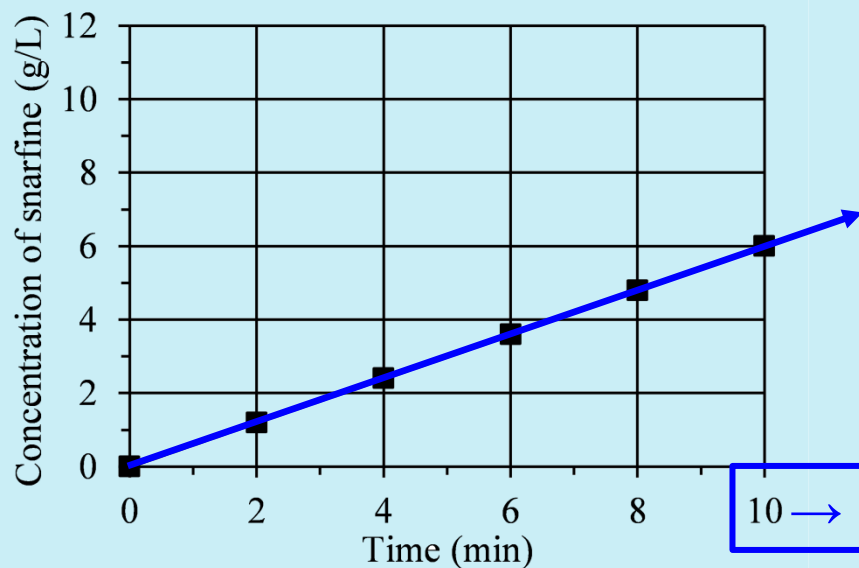


Figure 1

If, in **Experiment 1**, a measurement had been taken **12 minutes** after the start of the experiment, the **concentration of snarfine** most likely would have been closest to which of the following?

- F. 4.2 g/L
- G. 5.5 g/L
- H. 7.2 g/L
- J. 10.8 g/L

Experiment 1

Students added 2 g of powdered blergarine to a beaker filled with 100 mL of water at 20°C. Every 2 minutes, a PKE meter was used to measure the concentration of snarfine. The results are shown in Figure 1.

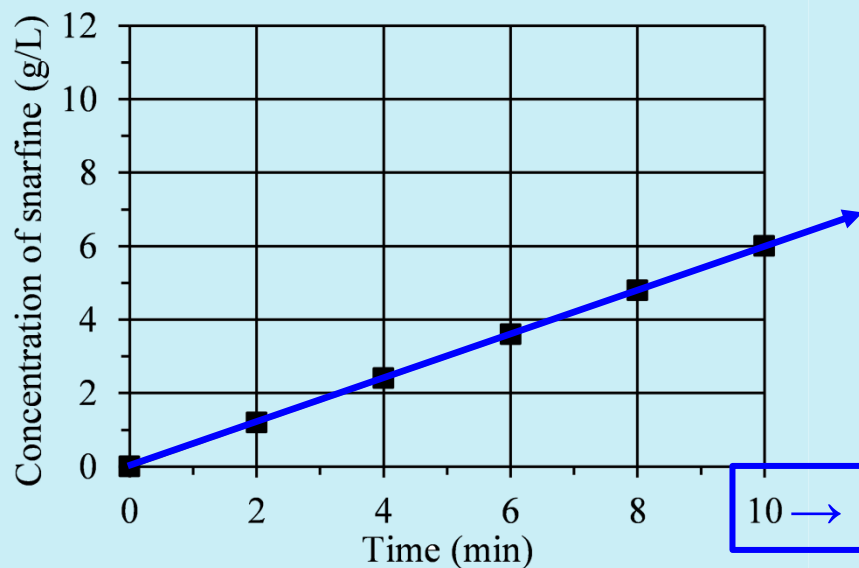


Figure 1

If, in **Experiment 1**, a measurement had been taken **12 minutes** after the start of the experiment, the **concentration of snarfine** most likely would have been closest to which of the following?

- F. 4.2 g/L
- G. 5.5 g/L
- H. 7.2 g/L
- J. 10.8 g/L